

ADDRESS: 10641  
 SCRIPPS SUMMIT COURT  
 SAN DIEGO, CA 92131

ASSESSORS PARCEL NUMBER:  
 LOT 16 ~ 316-331-06; LOT 15 ~ 316-331-05

PROJECT TITLE: SUMMIT POINTE

SCOPE OF WORK:  
 (1) NON-ILLUMINATED MONUMENT ID  
 (1) GATE DIRECTIONAL  
 (1) DIRECTIONAL

OWNERS INFORMATION:  
 NEWPORT NATIONAL CORPORATION  
 1525 FARADAY AVE #100  
 CARLSBAD, CA 92008

# COASTAL SIGNAGE +WAYFINDING

MAKE A FIRST IMPRESSION THAT LASTS

4139 AVENIDA DE LA PLATA  
 OCEANSIDE, CA 92056  
 TEL. 760.744.2927

All ideas, plans or arrangements indicated on this drawing are copyrighted and owned by Coastal Signage + Wayfinding Inc. and shall not be reproduced, used by or disclosed to any person, firm or corporation without written permission of Coastal Signage + Wayfinding Inc. Drawings are for esthetic reference purpose only and the dimensions are not to be taken as fact.

SALES: CS  
 DESIGN: SHEILA GRANT  
 PROJECT MANAGER: CS

## Newport National Summit Pointe

10641 Scripps Summit Court  
 San Diego, CA, 92131

### Sign Type 1 ID MONUMENT MULTI-TENANT

This drawing has been reviewed and is ...

- Approved Without Exception
- Approved As Noted
- To Be Revised and Resubmitted

By \_\_\_\_\_  
 Date \_\_\_\_\_

After corrections are made, your signature releases Coastal Signage & Wayfinding for errors appearing on art that may be discovered when the project is completed.

- Design 1: 07/30/17 (7.0)
- Revision 1: 08/11/17 (4.0)
- Revision 2: 08/11/17 (2.5)
- Revision 3: 08/28/17 (2.5)
- Revision 4: 09/18/17 (1.50)
- Revision 5: 10/10/17 (1.50)
- Revision 6: 10/18/17 (1.0)
- Revision 7&8: 11/02/17 (.50)
- Revision 9: 11/28/17 (.50)
- Revision 10: 01/25/18 (.25)

All ideas, plans or arrangements indicated on this drawing are copyrighted and owned by Coastal Signage + Wayfinding Inc. and shall not be reproduced, used by or disclosed to any person, firm or corporation without written permission of Coastal Signage + Wayfinding Inc. Drawings are for esthetic reference purpose only and the dimensions are not to be taken as fact.

SALES: CS  
DESIGN: SHEILA GRANT  
PROJECT MANAGER: CS

**Newport National  
Summit Pointe**

10641 Scripps Summit Court  
San Diego, CA, 92131

**Sign Type 1  
ID MONUMENT  
MULTI-TENANT**

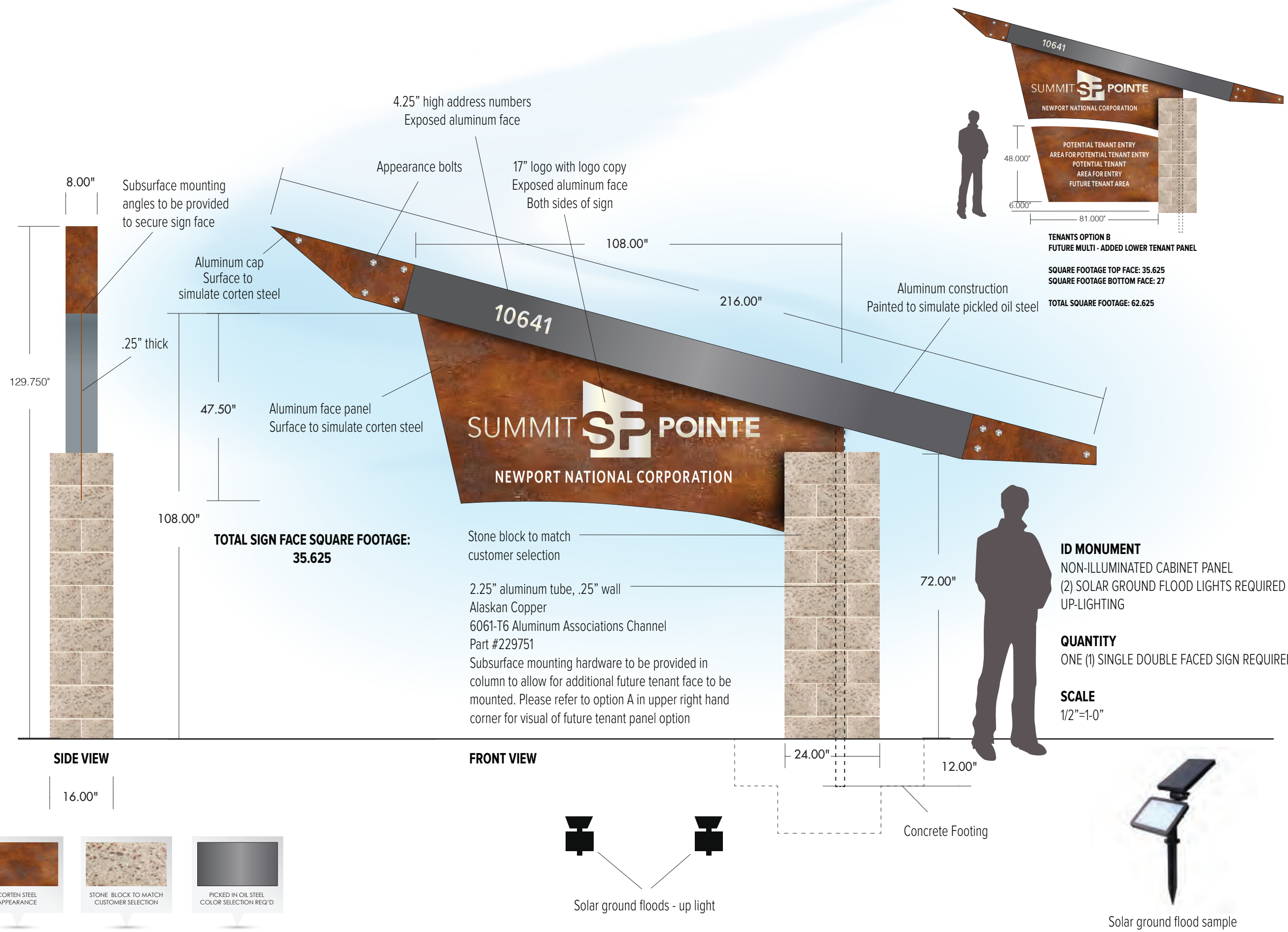
This drawing has been reviewed and is ...

- Approved Without Exception
- Approved As Noted
- To Be Revised and Resubmitted

By \_\_\_\_\_  
Date \_\_\_\_\_

After corrections are made, your signature releases Coastal Signage & Wayfinding for errors appearing on art that may be discovered when the project is completed.

- Design 1: 07/30/17 (7.0)
- Revision 1: 08/11/17 (4.0)
- Revision 2: 08/11/17 (2.5)
- Revision 3: 08/28/17 (2.5)
- Revision 4: 09/18/17 (1.50)
- Revision 5: 10/10/17 (1.50)
- Revision 6: 10/18/17 (1.0)
- Revision 7&8: 11/02/17 (.50)
- Revision 9: 11/28/17 (.50)
- Revision 10: 01/25/18 (.25)





# COASTAL SIGNAGE +WAYFINDING

MAKE A FIRST IMPRESSION THAT LASTS

4139 AVENIDA DE LA PLATA

OCEANSIDE, CA 92056

TEL. 760.744.2927

All ideas, plans or arrangements indicated on this drawing are copyrighted and owned by Coastal Signage + Wayfinding Inc. and shall not be reproduced, used by or disclosed to any person, firm or corporation without written permission of Coastal Signage + Wayfinding Inc. Drawings are for esthetic reference purpose only and the dimensions are not to be taken as fact.

SALES: CS  
DESIGN: SHEILA GRANT  
PROJECT MANAGER: CS

## Newport National Summit Pointe

10641 Scripps Summit Court  
San Diego, CA, 92131

### SIGN TYPE 1 ID Monument Photo Placement

This drawing has been reviewed  
and is ...

- Approved Without Exception  
 Approved As Noted  
 To Be Revised and Resubmitted  
 \_\_\_\_\_

Date \_\_\_\_\_

After corrections are made, your signature  
releases Coastal Signage & Wayfinding for  
errors appearing on art that may be  
discovered when the project is completed.

- Design 1: 07/30/17 (7.0)  
△ Revision 1: 08/11/17 (4.0)  
Revision 2: 08/11/17 (2.5)  
Revision 3: 08/28/17 (2.5)  
Revision 4: 09/18/17 (1.50)  
Revision 5: 10/10/17 (1.50)  
Revision 6: 10/18/17 (1.0)  
Revision 7&8: 11/02/17 (.50)  
Revision 9: 11/28/17 (.50)  
Revision 10: 01/25/18 (.25)

**3.0** JOB NUMBER:10364

All ideas, plans or arrangements indicated on this drawing are copyrighted and owned by Coastal Signage + Wayfinding Inc. and shall not be reproduced, used by or disclosed to any person, firm or corporation without written permission of Coastal Signage + Wayfinding Inc. Drawings are for esthetic reference purpose only and the dimensions are not to be taken as fact.

SALES: CS  
 DESIGN: SHEILA GRANT  
 PROJECT MANAGER: CS

**Newport National  
 Summit Pointe**

10641 Scripps Summit Court  
 San Diego, CA, 92131

**SIGN TYPE 2**  
 Gate Directional

This drawing has been reviewed and is ...

- Approved Without Exception
- Approved As Noted
- To Be Revised and Resubmitted
- \_\_\_\_\_  
Date \_\_\_\_\_

After corrections are made, your signature releases Coastal Signage & Wayfinding for errors appearing on art that may be discovered when the project is completed.

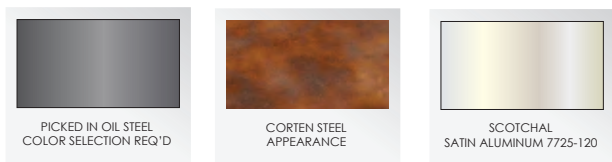
- △ Design 1: 07/30/17 (7.0)
- △ Revision 1: 08/11/17 (4.0)
- △ Revision 2: 08/11/17 (2.5)
- △ Revision 3: 08/28/17 (2.5)
- △ Revision 4: 09/18/17 (1.50)
- △ Revision 5: 10/10/17 (1.50)
- △ Revision 6: 10/18/17 (1.0)
- △ Revision 7&8: 11/02/17 (.50)
- △ Revision 9: 11/28/17 (.50)
- △ Revision 10: 01/25/18 (.25)



**GATE DIRECTIONAL**  
 NON-ILLUMINATED ALUMINUM CONSTRUCTED SIGN  
 CONCRETE FOOTING REQUIRED

**QUANTITY**  
 ONE (1) SINGLE FACED SIGN REQUIRED

**SCALE**  
 3/4"=1'-0"



All ideas, plans or arrangements indicated on this drawing are copyrighted and owned by Coastal Signage + Wayfinding Inc. and shall not be reproduced, used by or disclosed to any person, firm or corporation without written permission of Coastal Signage + Wayfinding Inc. Drawings are for esthetic reference purpose only and the dimensions are not to be taken as fact.

SALES: CS  
 DESIGN: SHEILA GRANT  
 PROJECT MANAGER: CS

**Newport National  
 Summit Pointe**

10641 Scripps Summit Court  
 San Diego, CA, 92131

**SIGN TYPE 3**  
 Exterior Post  
 Directional

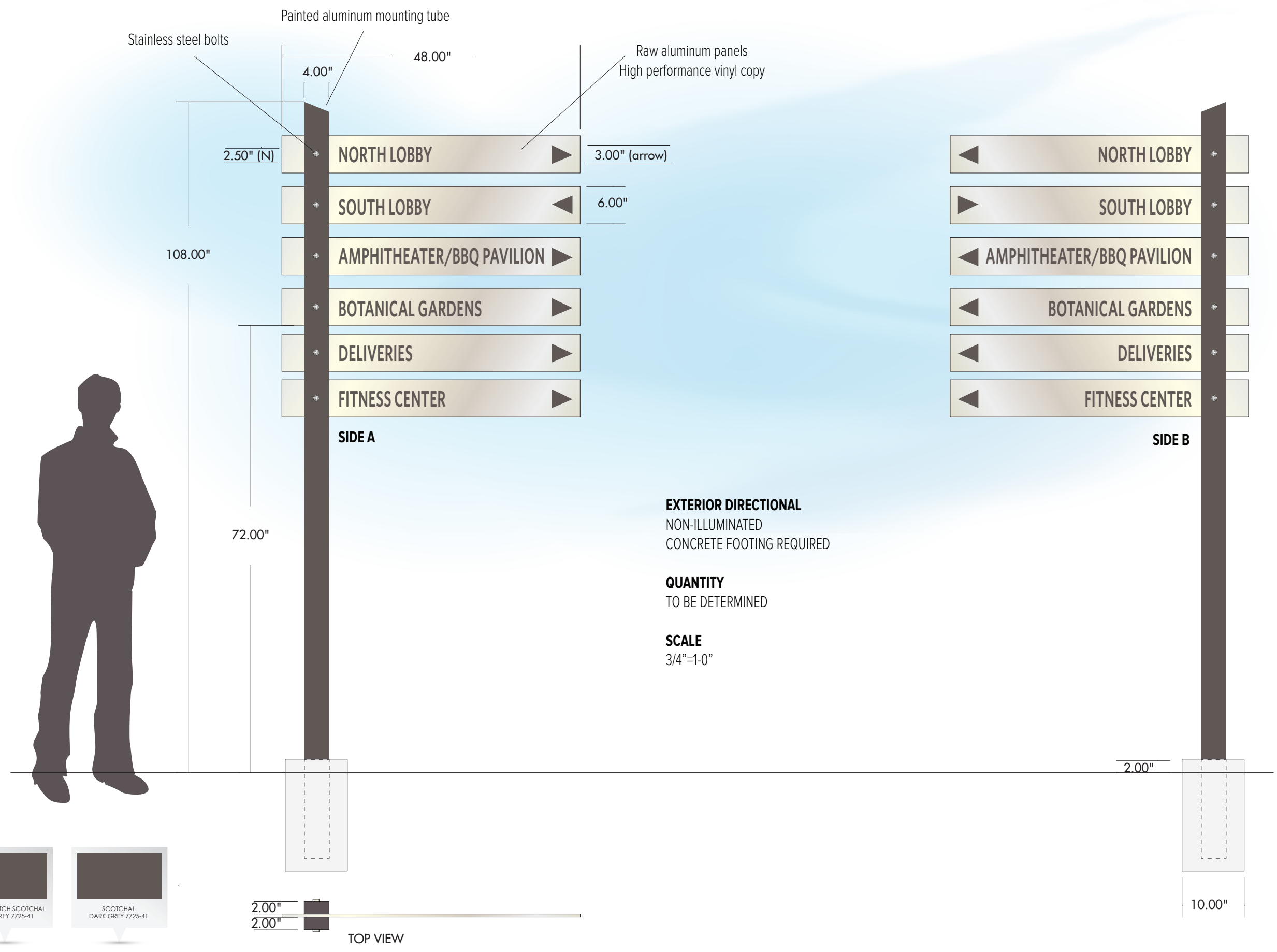
This drawing has been reviewed and is ...

- Approved Without Exception
- Approved As Noted
- To Be Revised and Resubmitted

By \_\_\_\_\_  
 Date \_\_\_\_\_

After corrections are made, your signature releases Coastal Signage & Wayfinding for errors appearing on art that may be discovered when the project is completed.

- Design 1: 07/30/17 (7.0)
- △ Revision 1: 08/11/17 (4.0)
- Revision 2: 08/11/17 (2.5)
- Revision 3: 08/28/17 (2.5)
- Revision 4: 09/18/17 (1.50)
- Revision 5: 10/10/17 (1.50)
- Revision 6: 10/18/17 (1.0)
- Revision 7&8: 11/02/17 (.50)
- Revision 9: 11/28/17 (.50)
- Revision 10: 01/25/18 (.25)



All ideas, plans or arrangements indicated on this drawing are copyrighted and owned by Coastal Signage + Wayfinding Inc. and shall not be reproduced, used by or disclosed to any person, firm or corporation without written permission of Coastal Signage + Wayfinding Inc. Drawings are for esthetic reference purpose only and the dimensions are not to be taken as fact.

SALES: CS  
 DESIGN: SHEILA GRANT  
 PROJECT MANAGER: CS

**Newport National  
 Summit Pointe**

10641 Scripps Summit Court  
 San Diego, CA, 92131

**SIGN TYPE 4**  
 Regulatory

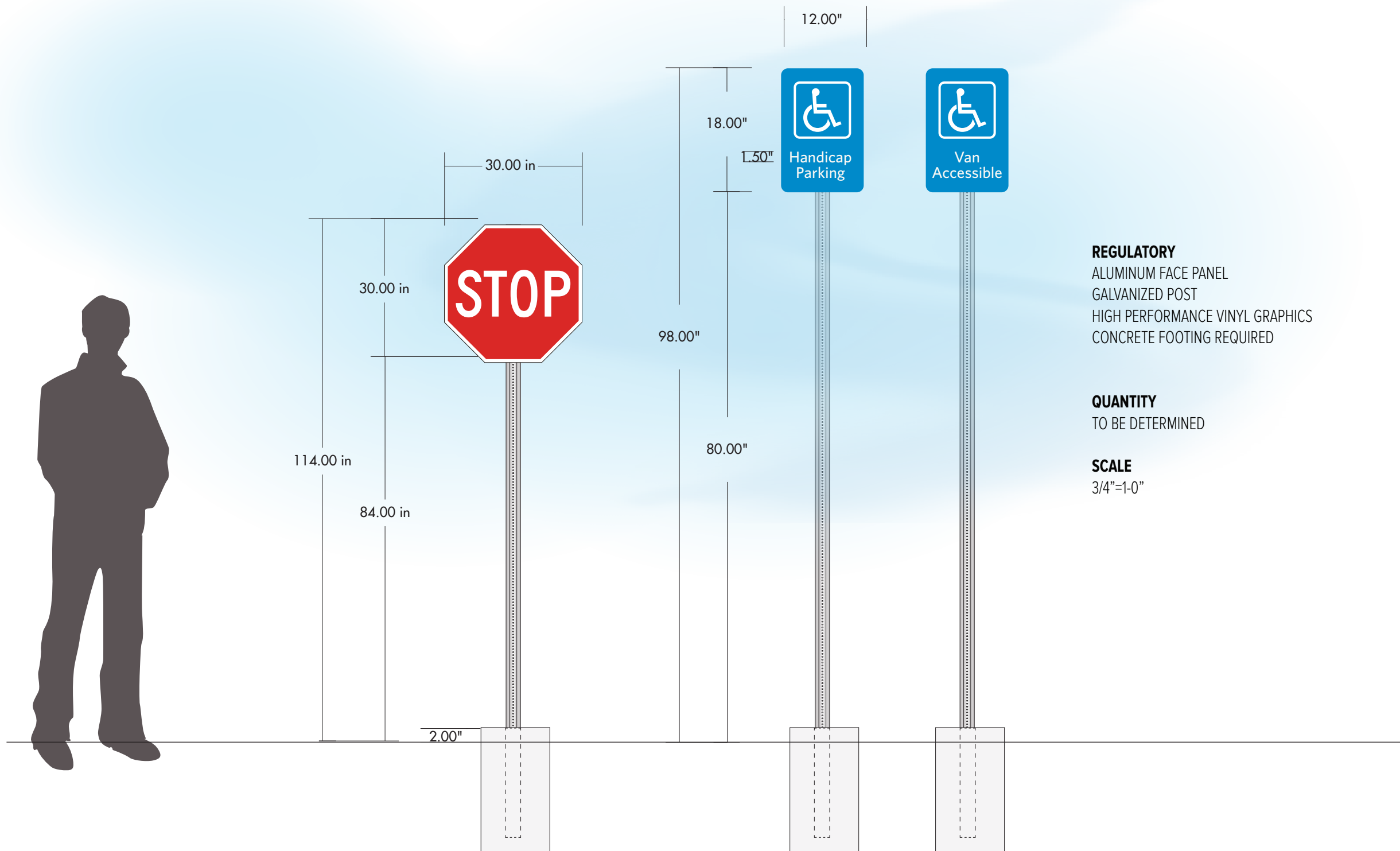
This drawing has been reviewed and is ...

- Approved Without Exception
- Approved As Noted
- To Be Revised and Resubmitted

By \_\_\_\_\_  
 Date \_\_\_\_\_

After corrections are made, your signature releases Coastal Signage & Wayfinding for errors appearing on art that may be discovered when the project is completed.

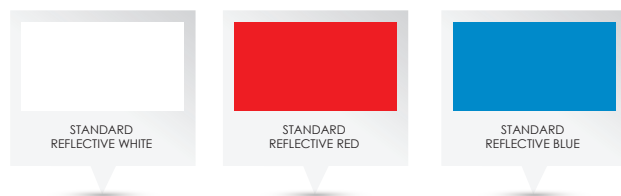
- Design 1: 07/30/17 (7.0)
- △ Revision 1: 08/11/17 (4.0)
- Revision 2: 08/11/17 (2.5)
- Revision 3: 08/28/17 (2.5)
- Revision 4: 09/18/17 (1.50)
- Revision 5: 10/10/17 (1.50)
- Revision 6: 10/18/17 (1.0)
- Revision 7&8: 11/02/17 (.50)
- Revision 9: 11/28/17 (.50)
- Revision 10: 01/25/18 (.25)



**REGULATORY**  
 ALUMINUM FACE PANEL  
 GALVANIZED POST  
 HIGH PERFORMANCE VINYL GRAPHICS  
 CONCRETE FOOTING REQUIRED

**QUANTITY**  
 TO BE DETERMINED

**SCALE**  
 3/4"=1'-0"



All ideas, plans or arrangements indicated on this drawing are copyrighted and owned by Coastal Signage + Wayfinding Inc. and shall not be reproduced, used by or disclosed to any person, firm or corporation without written permission of Coastal Signage + Wayfinding Inc. Drawings are for esthetic reference purpose only and the dimensions are not to be taken as fact.

SALES: CS  
 DESIGN: SHEILA GRANT  
 PROJECT MANAGER: CS

**Newport National  
 Summit Pointe**

10641 Scripps Summit Court  
 San Diego, CA, 92131

**SIGN TYPE 5**

Interior  
 Tenant Sign

This drawing has been reviewed and is ...

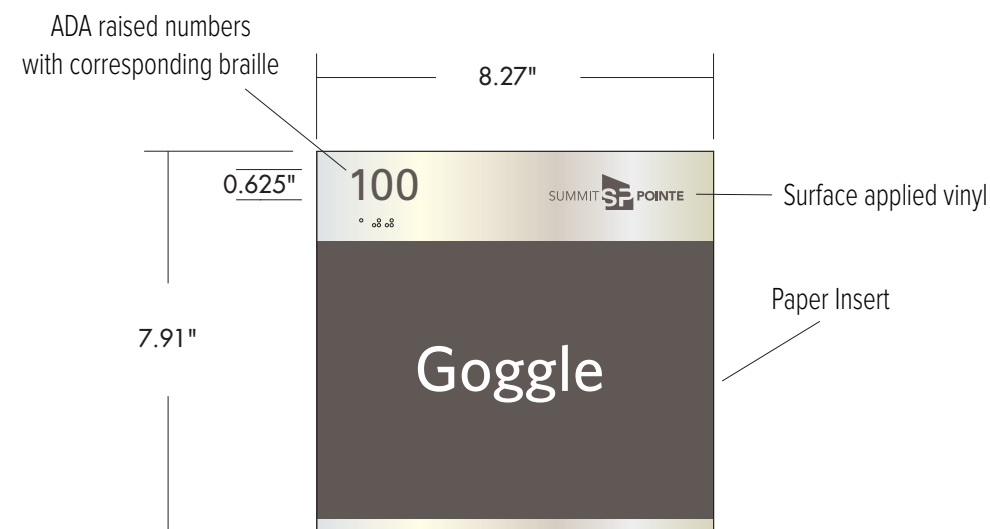
- Approved Without Exception
- Approved As Noted
- To Be Revised and Resubmitted

By \_\_\_\_\_

Date \_\_\_\_\_

After corrections are made, your signature releases Coastal Signage & Wayfinding for errors appearing on art that may be discovered when the project is completed.

- Design 1: 07/30/17 (7.0)
- △ Revision 1: 08/11/17 (4.0)
- Revision 2: 08/11/17 (2.5)
- Revision 3: 08/28/17 (2.5)
- Revision 4: 09/18/17 (1.50)
- Revision 5: 10/10/17 (1.50)
- Revision 6: 10/18/17 (1.0)
- Revision 7&8: 11/02/17 (.50)
- Revision 9: 11/28/17 (.50)
- Revision 10: 01/25/18 (.25)



**DANSIGN ID SIGNS**

CURVESIGN  
 PAPERFLEX  
 A5  
 RAISED ROOM NUMBER WITH BRAILLE  
 PRINTED INSERT (LOWER PORTION)

**MOUNTING**

MOUNTING TYPE 1 - GLASS - VINYL BACKER REQUIRED  
 MOUNTING TYPE 2 - DRYWALL

**QUANTITY**

TO BE DETERMINED

**SCALE**

3"=1'-0"



SCOTCHAL  
 DARK GREY 7725-41



RAISED COPY TO MATCH  
 SCOTCHAL DK. GREY 7725-41

All ideas, plans or arrangements indicated on this drawing are copyrighted and owned by Coastal Signage + Wayfinding Inc. and shall not be reproduced, used by or disclosed to any person, firm or corporation without written permission of Coastal Signage + Wayfinding Inc. Drawings are for esthetic reference purpose only and the dimensions are not to be taken as fact.

SALES: CS  
 DESIGN: SHEILA GRANT  
 PROJECT MANAGER: CS

**Newport National  
 Summit Pointe**

10641 Scripps Summit Court  
 San Diego, CA, 92131

**SIGN TYPE 6**

Interior  
 Geometric Restroom

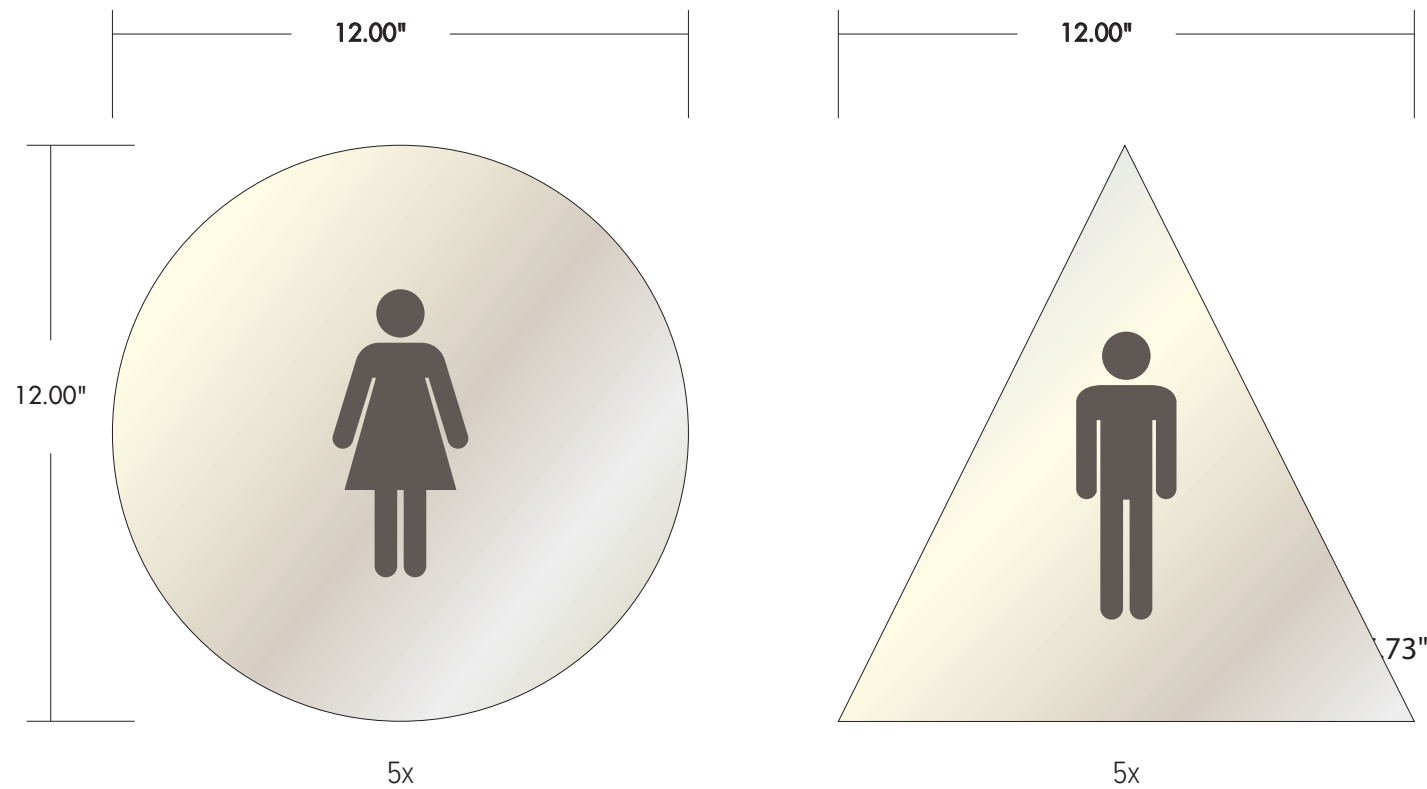
This drawing has been reviewed and is •••

- Approved Without Exception
- Approved As Noted
- To Be Revised and Resubmitted

By \_\_\_\_\_  
 Date \_\_\_\_\_

After corrections are made, your signature releases Coastal Signage & Wayfinding for errors appearing on art that may be discovered when the project is completed.

- Design 1: 07/30/17 (7.0)
- △ Revision 1: 08/11/17 (4.0)
- Revision 2: 08/11/17 (2.5)
- Revision 3: 08/28/17 (2.5)
- Revision 4: 09/18/17 (1.50)
- Revision 5: 10/10/17 (1.50)
- Revision 6: 10/18/17 (1.0)
- Revision 7&8: 11/02/17 (.50)
- Revision 9: 11/28/17 (.50)
- Revision 10: 01/25/18 (.25)

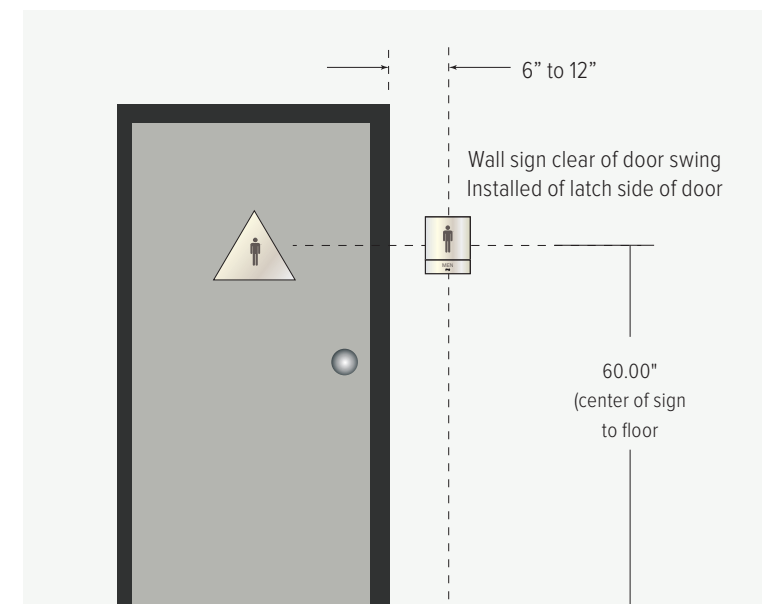


**RESTROOM ID SIGNS - GEOMETRIC**  
 ALUMINUM GEOMETRIC SHAPED PANELS-PAINTED  
 VINYL GRAPHICS

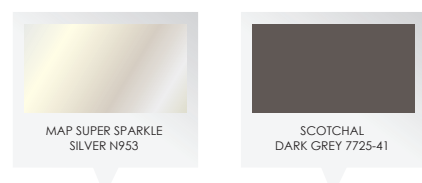
**MOUNTING**  
 MOUNTED TO DOOR AS REQUIRED

**QUANTITY**  
 AS NOTED

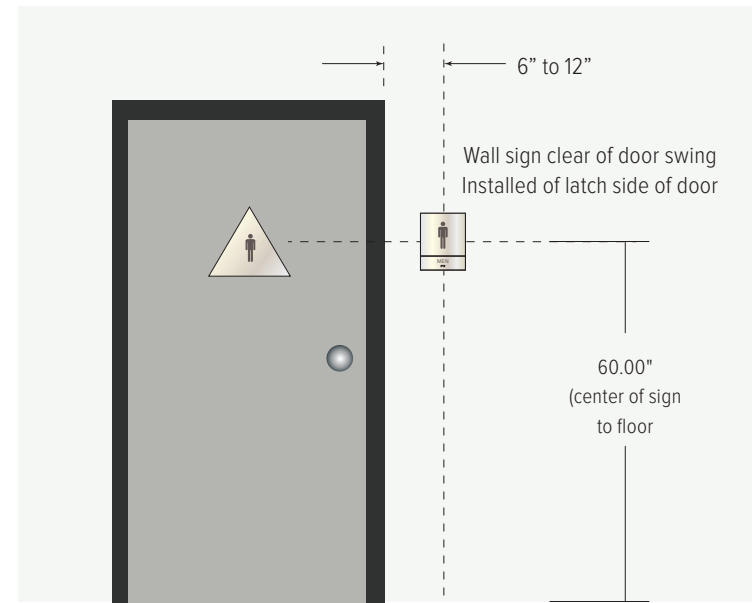
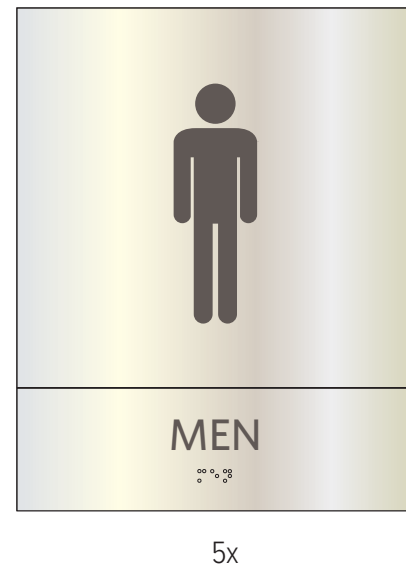
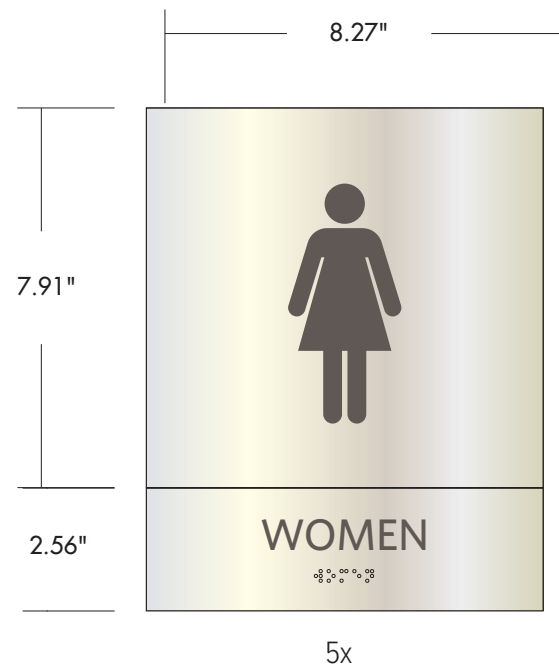
**SCALE**  
 3"=1'-0"



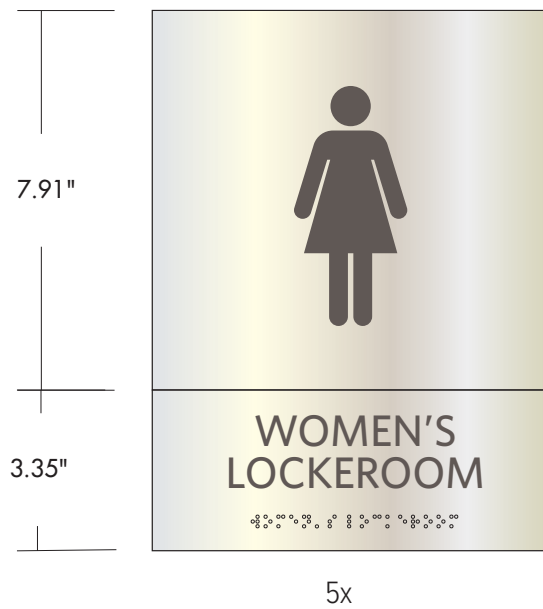
**RESTROOM INSTALLATION REQUIREMENTS**







**RESTROOM INSTALLATION REQUIREMENTS**



**RESTROOM ID SIGNS-STANARD**

DANSIGN CURVESIGN  
RAISED TEXT AND SYMBOLS  
BRAILLE

**MOUNTING**

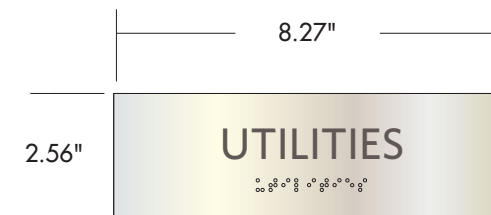
MOUNTED TO WALL AS REQUIRED

**QUANTITY**

AS NOTED

**SCALE**

3"=1-0"



QUANTITY TO BE DETERMINED  
FINAL LIST OF NAMES TO BE PROVIDED BY CUSTOMER



RAISED COPY TO MATCH  
SCOTCHAL DK. GREY 7725-41

**COASTAL SIGNAGE  
+WAYFINDING**

MAKE A FIRST IMPRESSION THAT LASTS

4139 AVENIDA DE LA PLATA

OCEANSIDE, CA 92056

TEL. 760.744.2927

All ideas, plans or arrangements indicated on this drawing are copyrighted and owned by Coastal Signage + Wayfinding Inc. and shall not be reproduced, used by or disclosed to any person, firm or corporation without written permission of Coastal Signage + Wayfinding Inc. Drawings are for esthetic reference purpose only and the dimensions are not to be taken as fact.

SALES: CS  
DESIGN: SHEILA GRANT  
PROJECT MANAGER: CS

**Newport National  
Summit Pointe**

10641 Scripps Summit Court  
San Diego, CA, 92131

**SIGN TYPE 7**

Interior Signs  
Restroom, Locker  
Utilities

This drawing has been reviewed  
and is ...

- Approved Without Exception
- Approved As Noted
- To Be Revised and Resubmitted

By \_\_\_\_\_  
Date \_\_\_\_\_

After corrections are made, your signature  
releases Coastal Signage & Wayfinding for  
errors appearing on art that may be  
discovered when the project is completed.

- Design 1: 07/30/17 (7.0)
- △ Revision 1: 08/11/17 (4.0)
- Revision 2: 08/11/17 (2.5)
- Revision 3: 08/28/17 (2.5)
- Revision 4: 09/18/17 (1.50)
- Revision 5: 10/10/17 (1.50)
- Revision 6: 10/18/17 (1.0)
- Revision 7&8: 11/02/17 (.50)
- Revision 9: 11/28/17 (.50)
- Revision 10: 01/25/18 (.25)

All ideas, plans or arrangements indicated on this drawing are copyrighted and owned by Coastal Signage + Wayfinding Inc. and shall not be reproduced, used by or disclosed to any person, firm or corporation without written permission of Coastal Signage + Wayfinding Inc. Drawings are for esthetic reference purpose only and the dimensions are not to be taken as fact.

SALES: CS  
DESIGN: SHEILA GRANT  
PROJECT MANAGER: CS

**Newport National  
Summit Pointe**

10641 Scripps Summit Court  
San Diego, CA, 92131

**SIGN TYPE 8**  
Interior Signs  
FITNESS CENTER

This drawing has been reviewed and is ...

- Approved Without Exception
- Approved As Noted
- To Be Revised and Resubmitted

By \_\_\_\_\_  
Date \_\_\_\_\_

After corrections are made, your signature releases Coastal Signage & Wayfinding for errors appearing on art that may be discovered when the project is completed.

- Design 1: 07/30/17 (7.0)
- △ Revision 1: 08/11/17 (4.0)
- Revision 2: 08/11/17 (2.5)
- Revision 3: 08/28/17 (2.5)
- Revision 4: 09/18/17 (1.50)
- Revision 5: 10/10/17 (1.50)
- Revision 6: 10/18/17 (1.0)
- Revision 7&8: 11/02/17 (.50)
- Revision 9: 11/28/17 (.50)
- Revision 10: 01/25/18 (.25)



**ALUMINUM PANEL**  
ALUMINUM PANEL  
SURFACE APPLIED DIGITAL PRINT

**MOUNTING**  
MOUNT TO DRYWALL AS REQUIRED

**QUANTITY**  
TO BE DETERMINED

**SCALE**  
3"=1'-0"

