



MT. VERNON INTERURBAN RAILWAY MARKER DESIGN

Sheila Grant
Art & Design

Submitted
January 2022



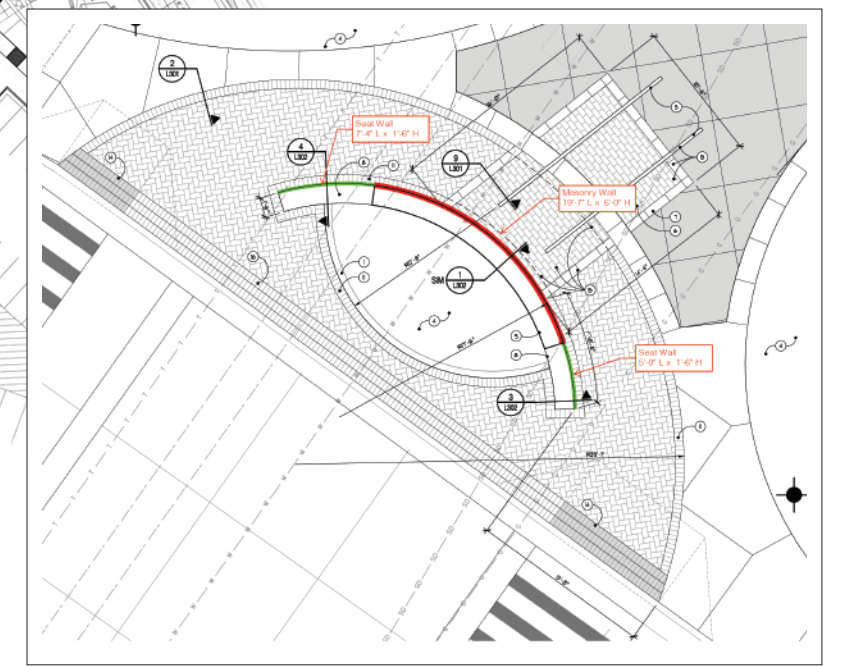
616.450.1767
sheila@creativelinestudio.com
creativelinestudio.com

Sheila Grant | ART & DESIGN

LOCATION / PLACEMENT

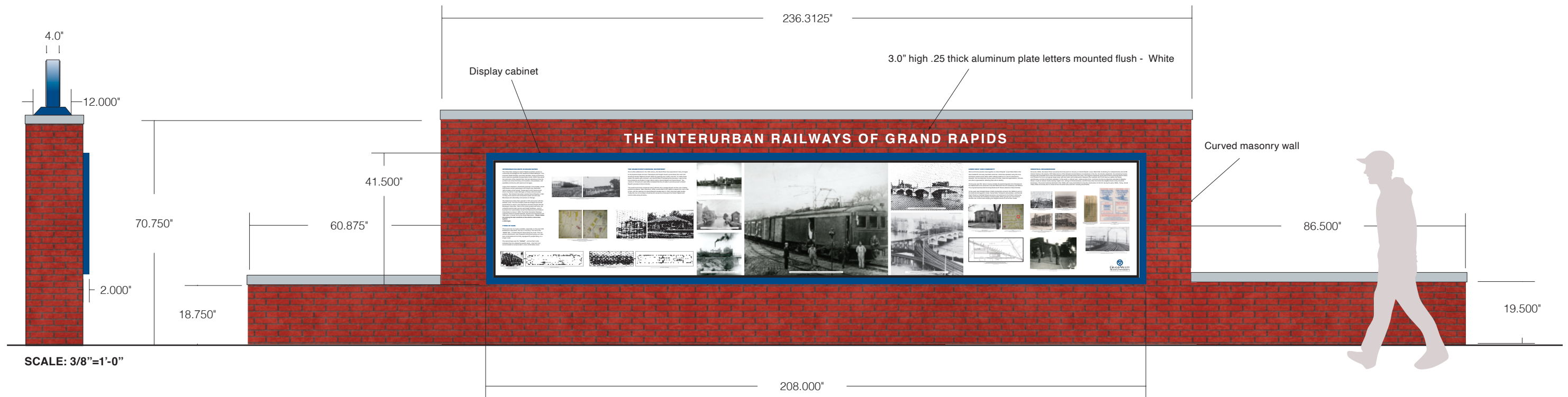


- | | |
|---------------------------------------|---|
| 1. GVSU Sign / Mt. Vernon Identity | 19. Laker Line Bus Stop |
| 2. Clay Brick Pavers | 20. Tables with Blue Umbrellas |
| 3. Sculptural Icon | 21. Benches |
| 4. Seat Wall with Plantings | 22. Decorative Bollards |
| 5. New Concrete Pavement | 23. Bike Racks |
| 6. Colored Concrete Pavement | 24. Existing Traffic Pole to Remain |
| 7. Lawn | 25. Reinforced Turf Billboard Access Drive |
| 8. Existing Deciduous Trees | 26. New Concrete Entry Drive |
| 9. Deciduous Trees | 27. Boulevard Island with GVSU Identity Sign |
| 10. Multi-Stemmed Trees | 28. Relocated Dumpster & Recycling Enclosure |
| 11. Ornamental Grasses - 24" -36" ht. | 29. Modified Concrete Sidewalks with Barrier Free Ramps |
| 12. Ornamental Trees | 30. 10' Wide Crosswalk and Sidewalk for Designated Bike Route |
| 13. Ornamental Metal Fence | 31. Artwall with GVSU / Mt. Vernon Identity |
| 14. Existing Ornamental Metal Fence | 32. New Parking Lot Exit Drive |
| 15. Existing Parking Lot Entrance | 33. Existing Billboard |
| 16. Existing Cooling Tower Enclosure | 34. Event Tent (80' x 120') |
| 17. Pedestrian Light Poles | 35. Rock Monument |
| 18. Delivery Vehicle Access | |









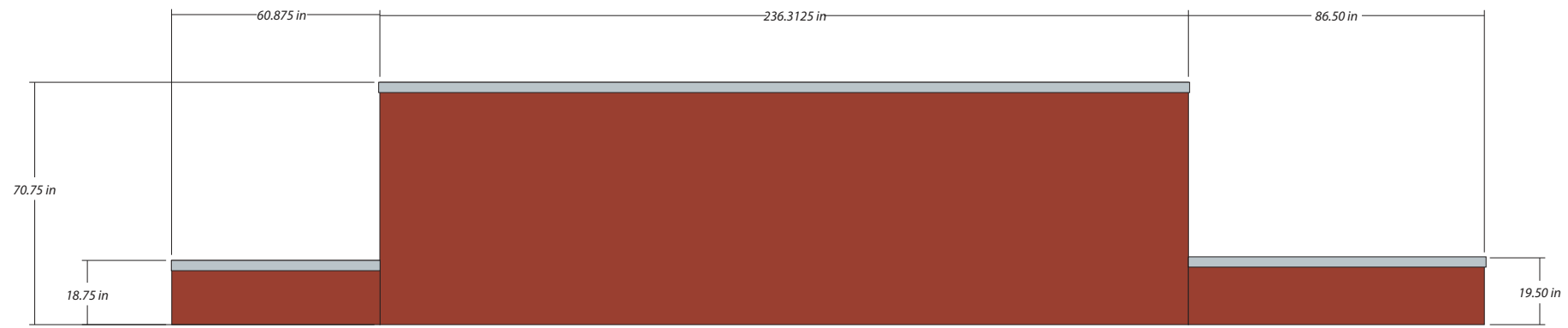
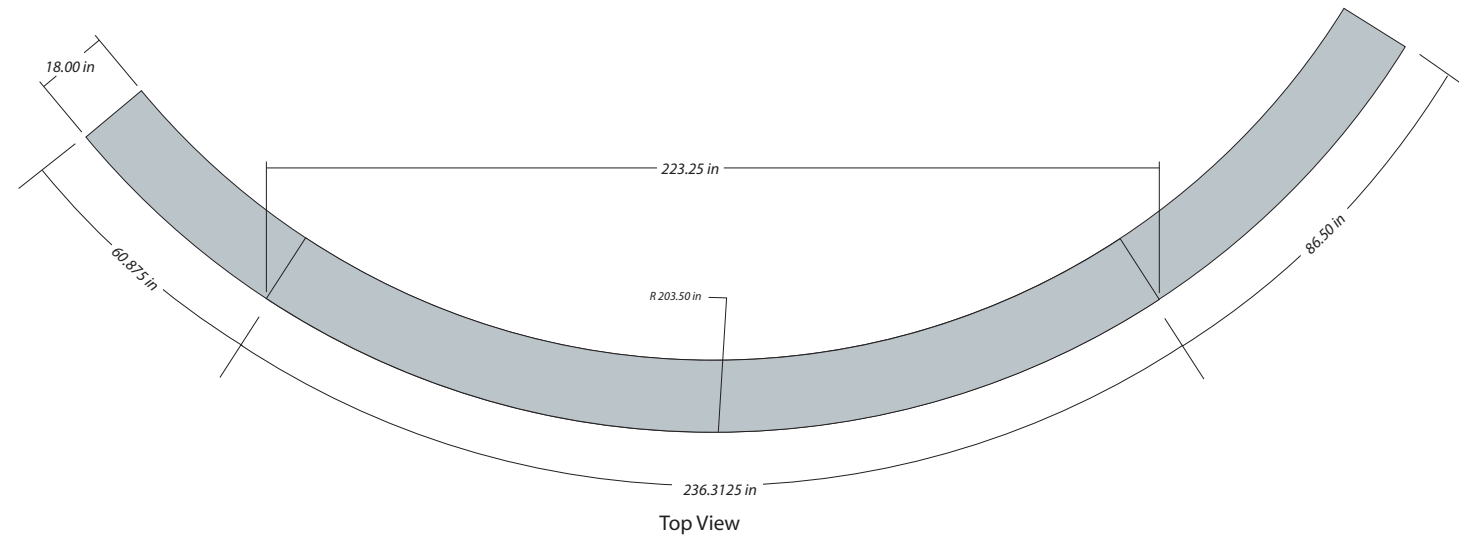
RAILWAY MARKER DESIGN - OPTION 6

- Fabricated non-illuminated cabinet
- Face material to be determined
- High quality digital print graphics
- Exterior quality paints & materials
- GVSU logo to support GVSU brand color - PMS 301C
- Display mounted flush, center on masonry wall
- All color specifications to be determined
- All digital image resolutions to be approved before final production
- All images to be check prior to printing to confirm resolution is acceptable. GVSU representative to approve images.

DOCUMENT TITLE:

GVSU_Mt. Vernon Pedestrian Mall_Interurban Railway Marker Design-4

FIELD MEASUREMENT DRAWING SHOWING ACTUAL SIZE OF MONUMENT
PROVIDED BY VALLEY CITY SIGN



SCALE: 1/4"=1'-0"

Front Flattened View

208.000"

41.500"

INTERURBAN RAILWAYS IN GRAND RAPIDS
The interurban railway in Grand Rapids provided convenient community advantages for the residents of West Michigan. This included health benefits, economic benefits, social connections, and more. The railway provided a means of transportation that was safe and reliable. It was the only way to travel between the city of Grand Rapids and other communities, and it was a vital link between the city and the surrounding countryside.

THE GRAND RIVER'S WORKING WATERFRONT
Since its settlement in the 18th century, the Grand River has experienced many changes in its physical shape and use. Passengers and freight moved up and down the river from Grand Rapids to Grand Haven by passing from vessel to vessel. The river water was the highway, and the boats were the highways. Large ships during the early part of the 19th century were used to transport lumber and other goods. The river was a vital link between the city and the surrounding countryside.

LOWER WEST SIDE COMMUNITY
The lower west side of Grand Rapids is the heart of the city's industrial and commercial activity. It is the site of many of the city's largest and most important buildings, including the Grand Rapids Public Library and the Grand Rapids Art Museum. The area is also home to many of the city's most important businesses and organizations.

INDUSTRIAL NEIGHBORHOOD
The industrial neighborhood in Grand Rapids is the heart of the city's manufacturing and industrial activity. It is the site of many of the city's largest and most important factories and mills, including the Grand Rapids Lumber Company and the Grand Rapids Paper Mill. The area is also home to many of the city's most important businesses and organizations.

TYPES OF CASES
There were two types of cases available, especially on the post-1915 "Road" car - if made frequent stops along the route. This car carried passengers, but it was not designed for carrying heavy loads. The second type was the "freight" car, and as their name indicates they were designed to carry heavy loads. They had more accommodations and provided a more comfortable travel experience.

OPTION 5 DISPLAY ONLY
SCALE: 3/4"=1'-0"



616.450.1767
sheila@creativelinestudio.com
creativelinestudio.com

