

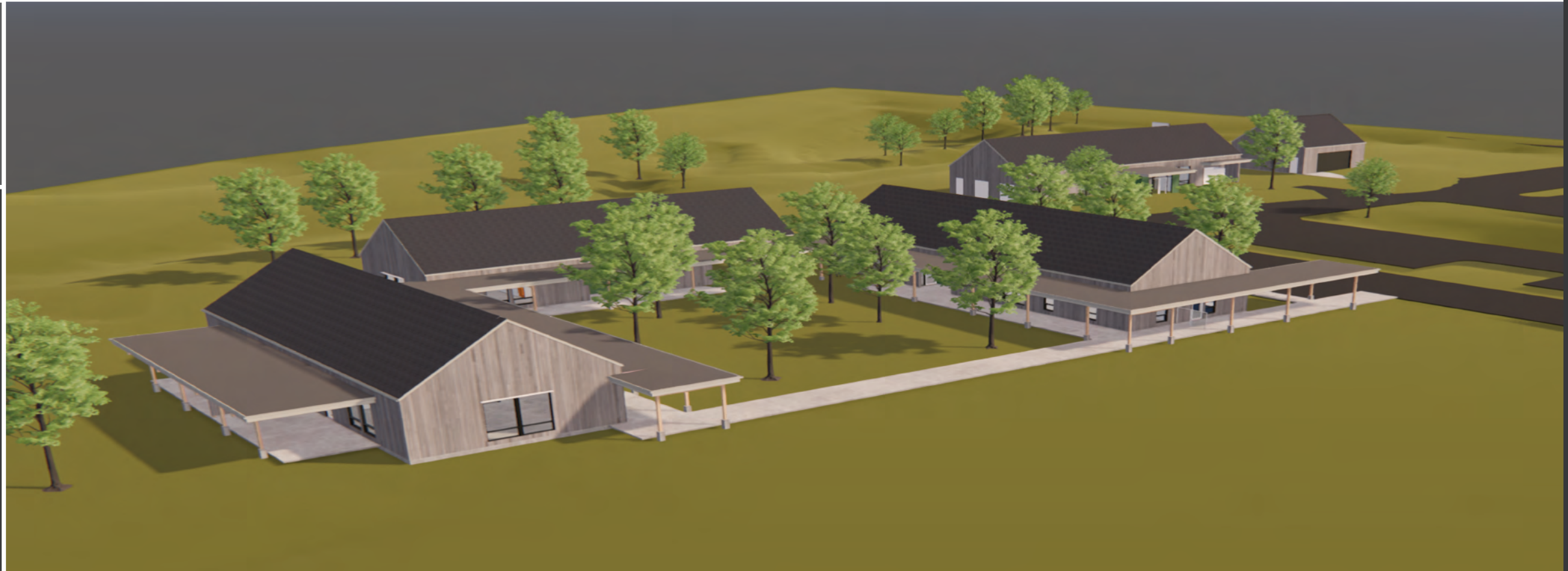


---

KAREN MULDER - ODC PRESCHOOL NORTH  
30 N. 152ND AVE, HOLLAND MICHIGAN 49424

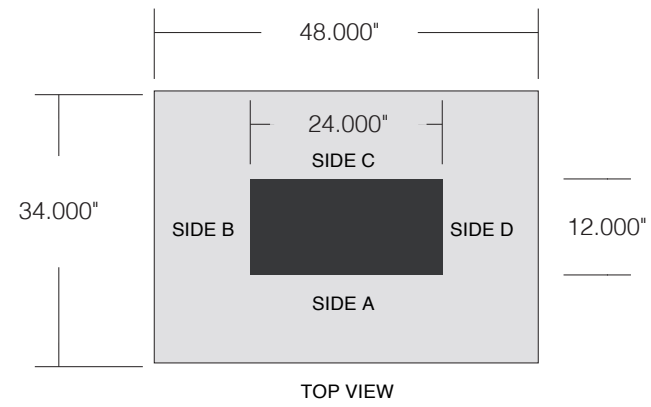
---

Sheila Grant  
Art & Design



616.450.1767  
sheila@creativelinestudio.com  
creativelinestudio.com

Sheila Grant | ART & DESIGN



PLACEMENT FOR SCULPTURE



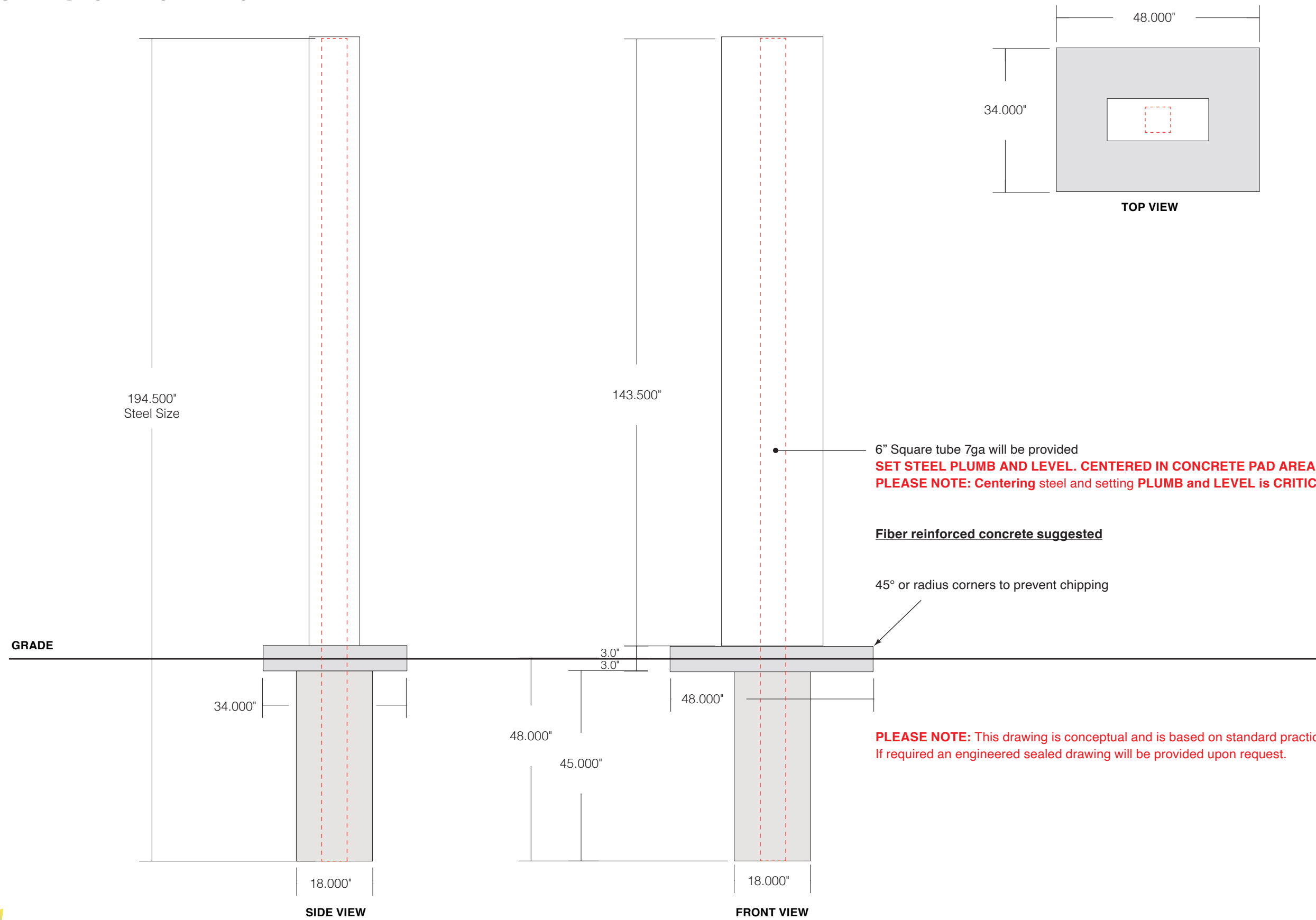
**DONOR SCULPTURE**

- Painted fabricated aluminum sculpture
- Dragonflies to be multidimensional aluminum fabricated pieces painted various colors
- Mounted with stand-off - paint mounting hardware as required to hide hardware
- Text to be painted to match Scotchcal Antique White 7725-90
- Exterior life materials to be used
- Cabinet to be mounted to existing steel in field
- .50" high artist signature to be painted Mathews paint MP23431 Dark Olive Green Metallic
- Text to represent Karen's legacy story. Finalized text required.
- Concrete base, and footing provided by customer
- Steel provided to customer to set in concrete
- Field measurement required

SCALE: 1/2" = 1'-0"

		
MATHEWS PAINT MP23430 CLASSIC GREEN BRONZE METALLIC	MATHEWS PAINT MATCH SCOTCHCAL ANTIQUÉ WHITE 7725-90	MATHEWS PAINT MP23431 DARK OLIVE GREEN METALLIC

# CONCRETE BASE INFORMATION

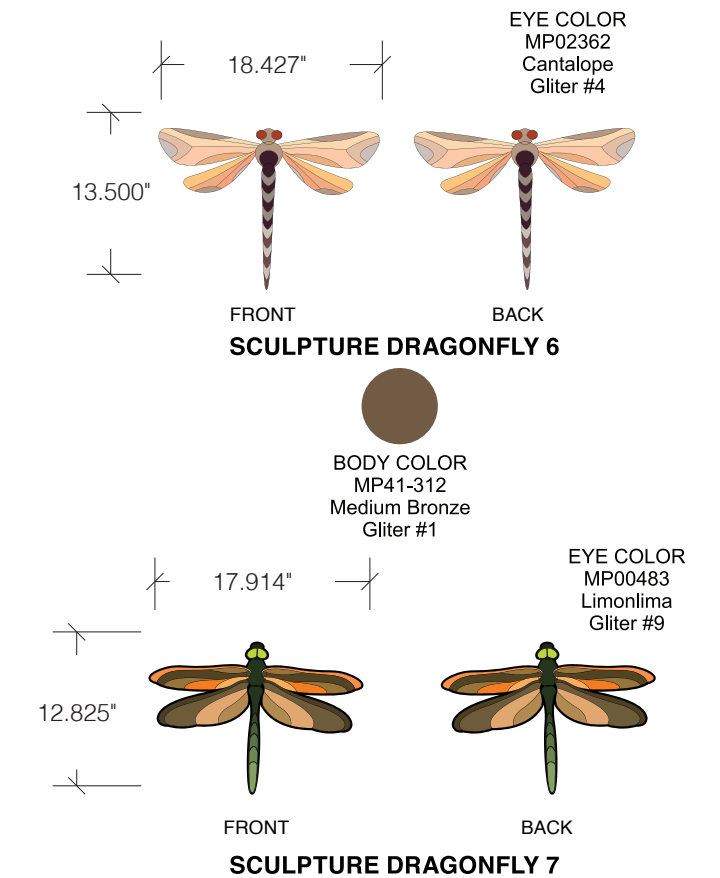
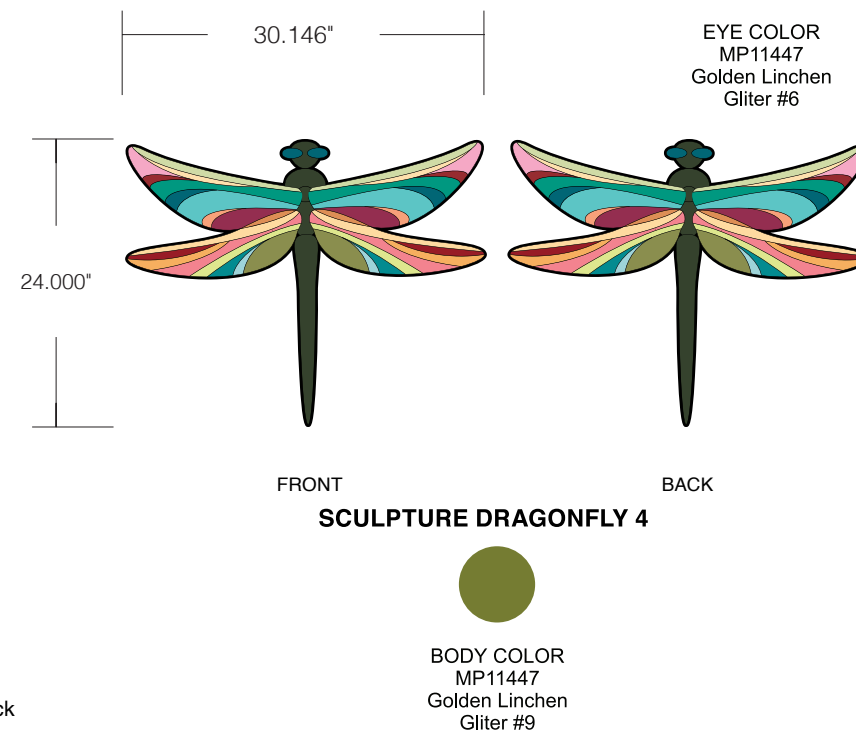
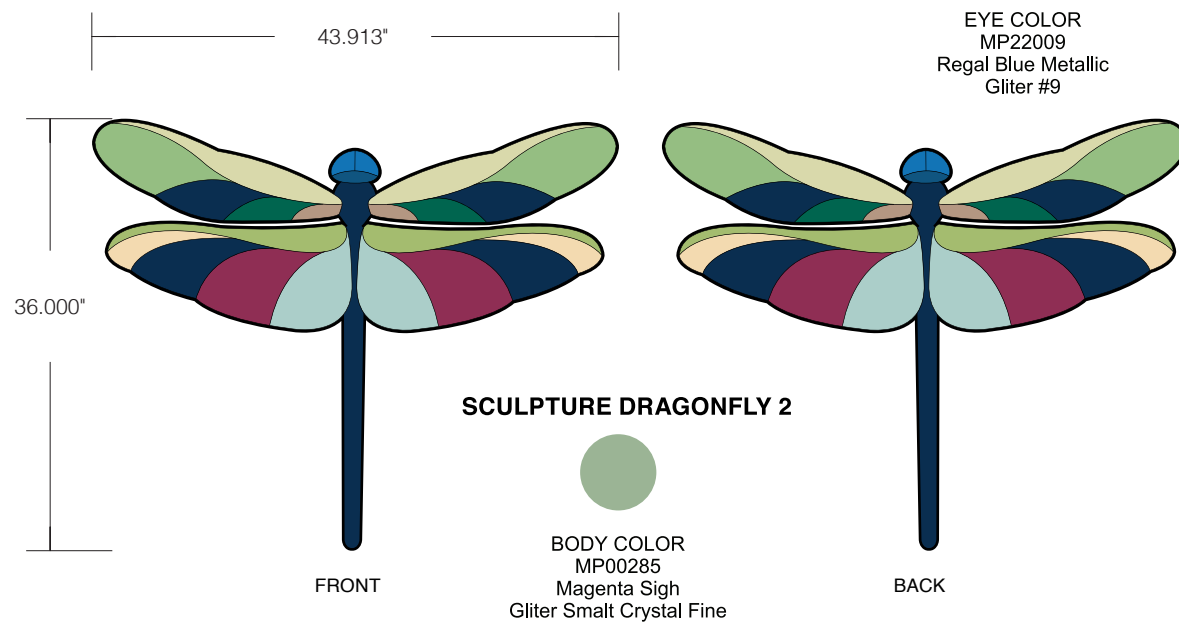
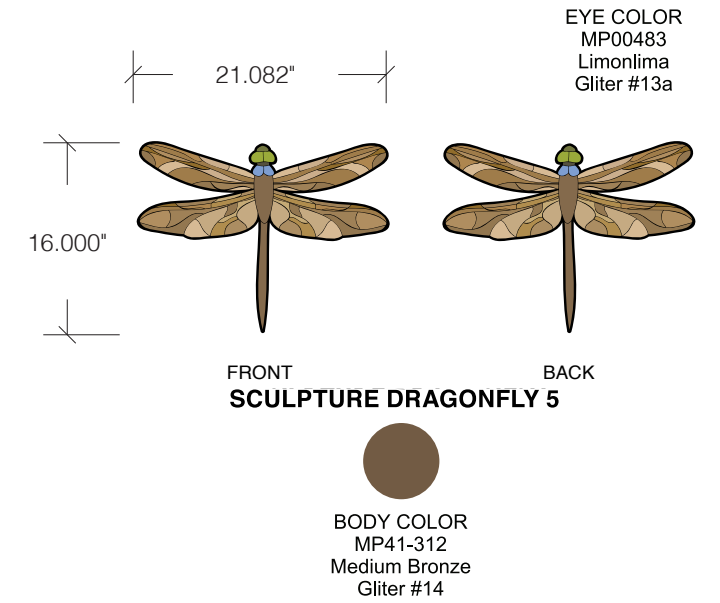
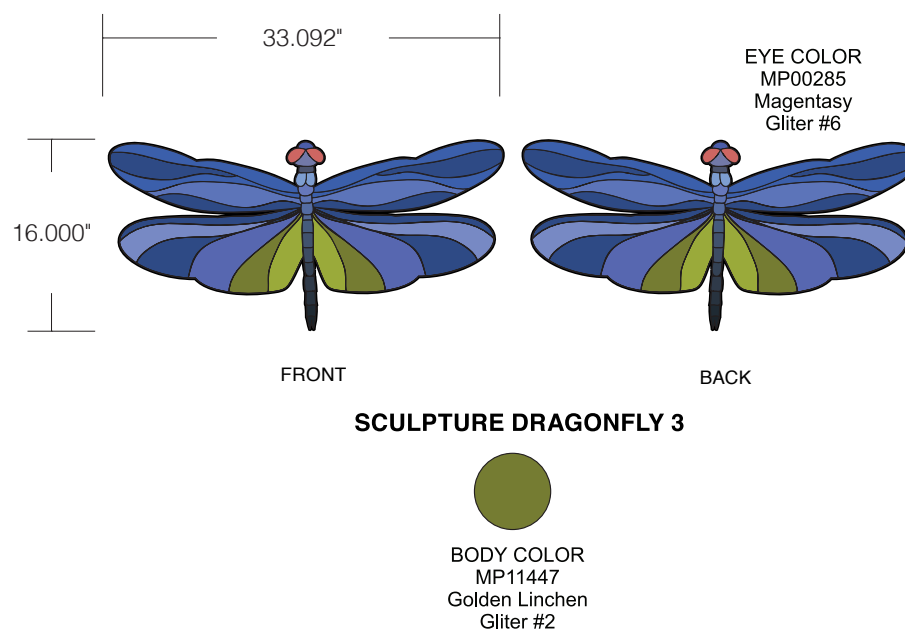
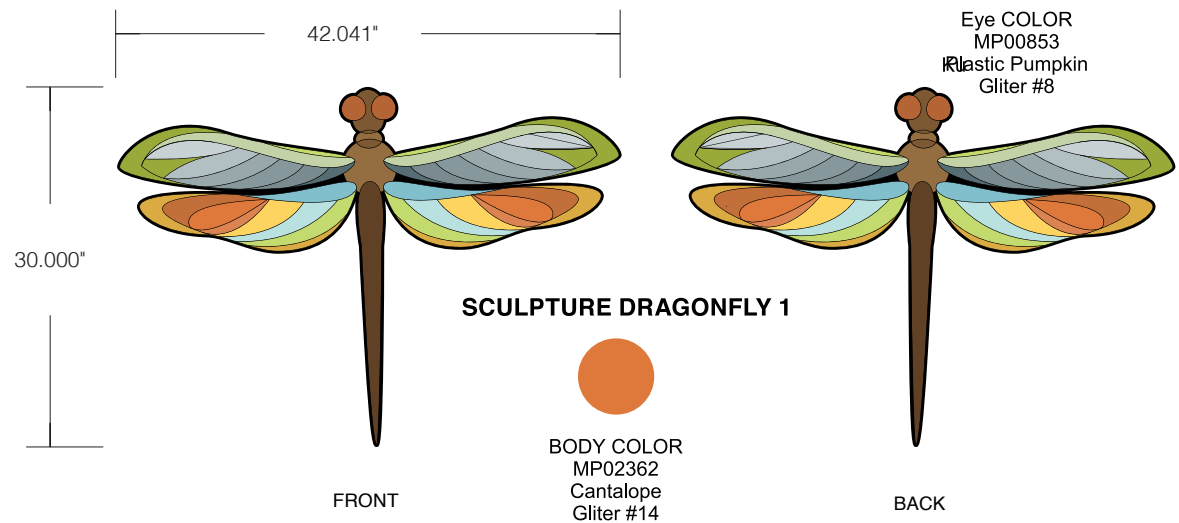


6" Square tube 7ga will be provided  
**SET STEEL PLUMB AND LEVEL. CENTERED IN CONCRETE PAD AREA.**  
**PLEASE NOTE: Centering steel and setting PLUMB and LEVEL is CRITICAL for future sculpture installation**

**Fiber reinforced concrete suggested**

45° or radius corners to prevent chipping

**PLEASE NOTE: This drawing is conceptual and is based on standard practices.**  
 If required an engineered sealed drawing will be provided upon request.



**DONOR SCULPTURE - INDIVIDUAL DRAGONFLY DETAILS**

Aluminum multidimensional fabrication - thickness as required  
 6 legs to be added at time of production files preparation - legs to be painted black  
 Bodies painted speicited colors with surfaced applied digital prints.  
 Mounted with stand-off  
 Mounting details to be determined  
 Exterior life materials to be used  
 Special attention to be made for the least obtrusive secure mount & extended exterior life materials

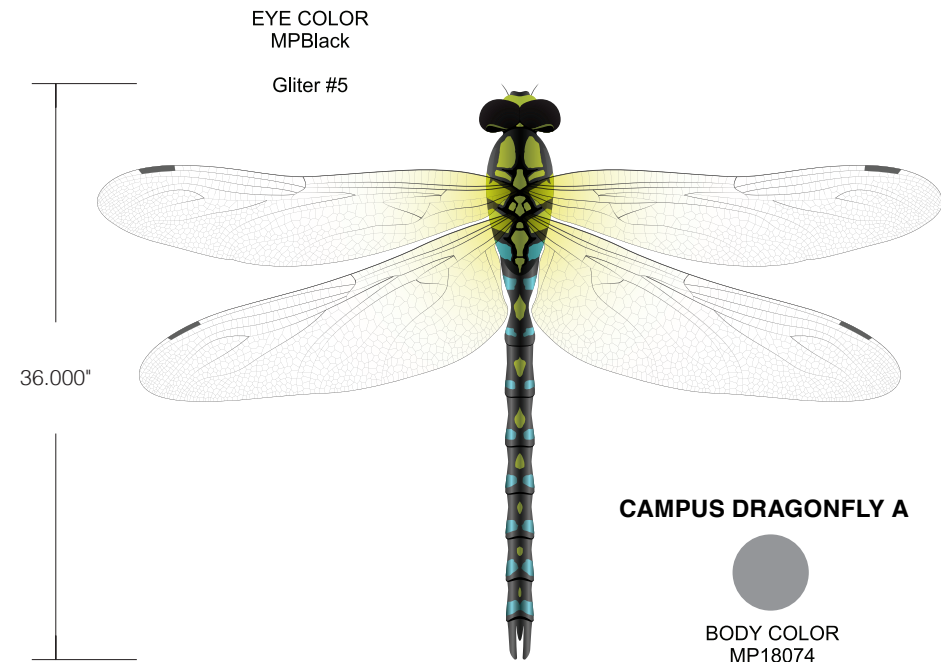


MATHEWS BLACK LEGS

SCALE: 3/4" = 1'-0"



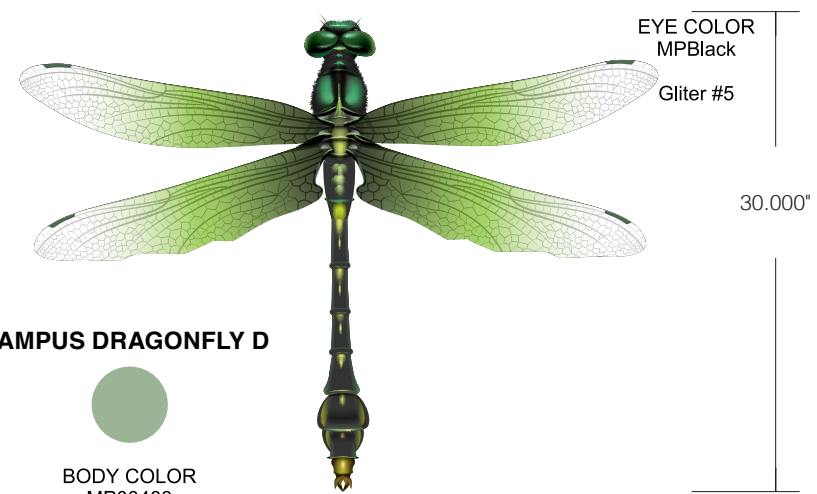
616.450.1767  
 sheila@creativelinestudio.com  
 creativelinestudio.com



**CAMPUS DRAGONFLY A**



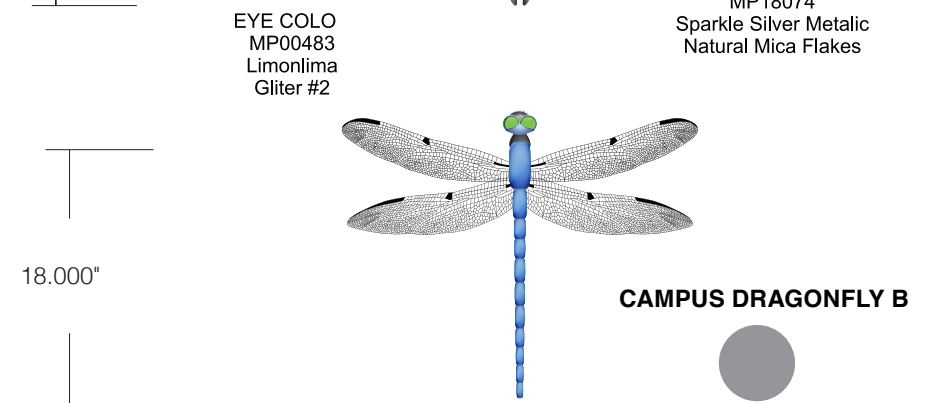
BODY COLOR  
MP18074  
Sparkle Silver Metallic  
Natural Mica Flakes



**CAMPUS DRAGONFLY D**



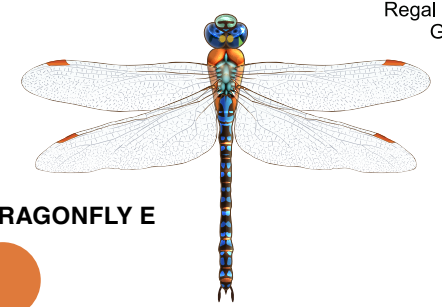
BODY COLOR  
MP00483  
Limonlima  
Gliter #10



**CAMPUS DRAGONFLY B**



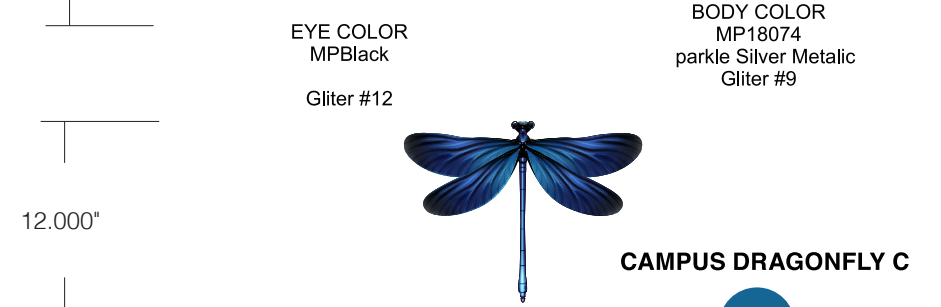
BODY COLOR  
MP18074  
parkle Silver Metallic  
Gliter #9



**CAMPUS DRAGONFLY E**



BODY COLOR  
MP00853  
Plastic Pumpkin  
Gliter #8



**CAMPUS DRAGONFLY C**



BODY COLOR  
MP22009  
Regal Blue Metallic  
Gliter #2



**CAMPUS DRAGONFLY F**



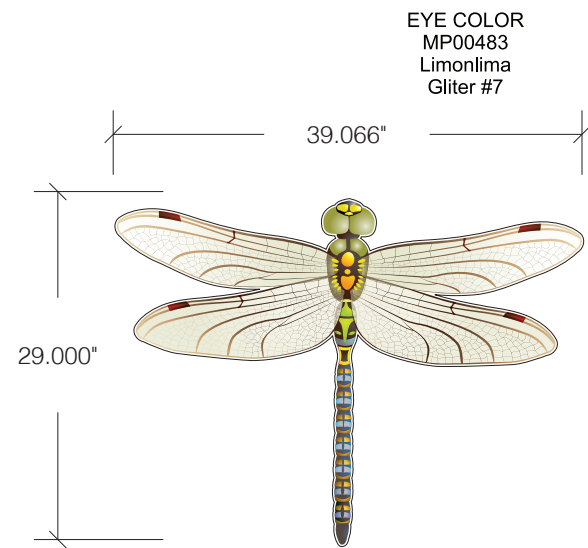
BODY COLOR  
MP00483  
Limonlima  
Gliter #4 & #11

**DRAGONFLIES - VARIOUS CAMPUS PLACEMENTS**

Aluminum multidimensional fabrication - thickness as required  
 6 legs to be added at time of production files preparation - legs to be painted black  
 Bodies painted speicited colors with surfaced applied digital prints.  
 Mounted with stand-off  
 Mounting details to be determined  
 Exterior life materials to be used  
 Special attention to be made for the least obtrusive secure mount & extended exterior life materials  
 Placement (exterior walkways, wall, post...) to be explored with ODC

SCALE: 1"=1'-0"





EYE COLOR  
MP00483  
Limonlima  
Glitter #7

**CAMPUS DRAGONFLY G**

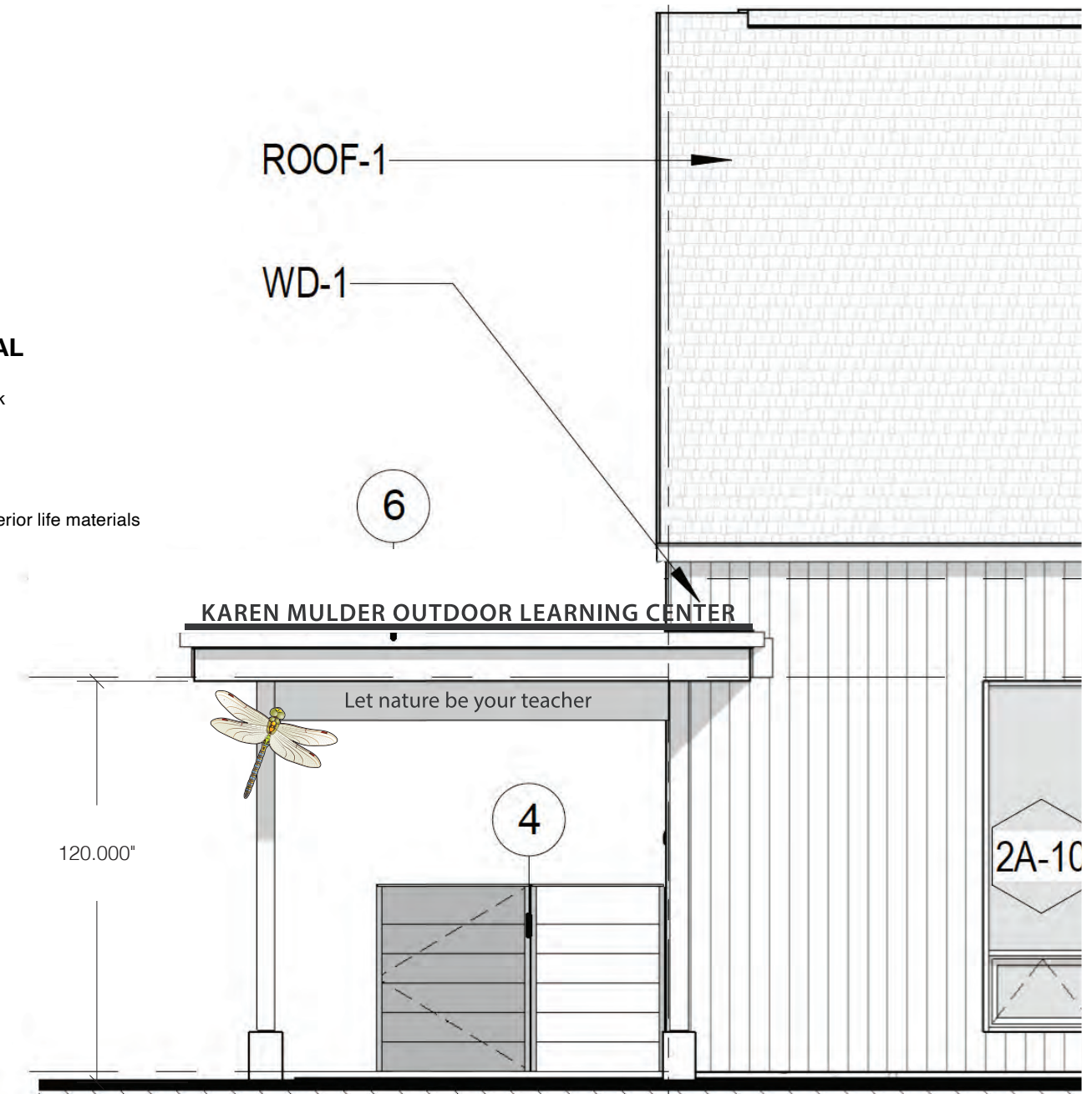
BODY COLOR  
MP 41-312  
Medium Bronze  
Glitter #9

MATHEWS BLACK LEGS

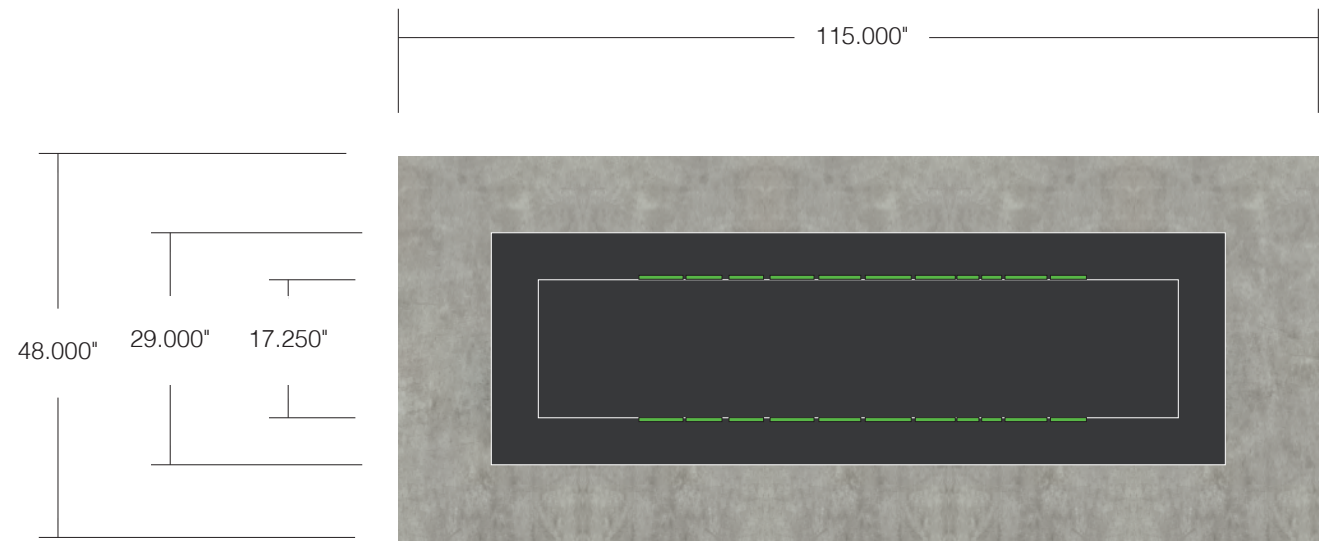
**DRAGONFLY - CAMPUS PLACMENT - ENTRY PORTOCAL**

Aluminum multidimensional fabrication - thickness as required  
6 legs to be added at time of production files preparation - legs to be painted black  
Bodies painted speicited color with surfaced applied digital prints.  
Mounted with stand-off  
Mounting details to be determined  
Exterior life materials to be used  
Special attention to be made for the least obtrusive secure mount & extended exterior life materials

SCALE: 3/4" = 1'-0"



**PLACEMENT**  
SCALE: 1/4" = 1'-0"



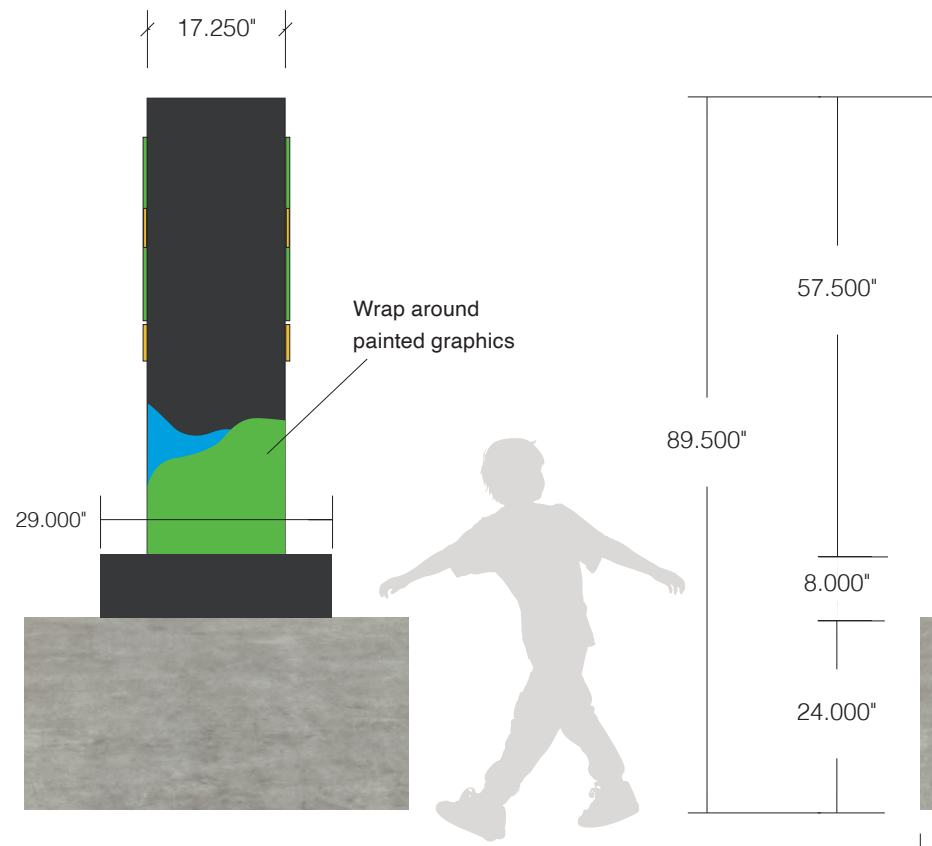
**MAIN IDENTIFICATION SIGN - OPTION 1**






Sign face: 32 square feet

- Fabricated aluminum exterior sign
- Cabinet to be painted with Mathews MP234330
- Hill and water graphic to be painted Mathews to match specified colors
- 30" total height dragonfly logo and logo text to be .50" deep aluminum letters
- Logo to be painted Mathews to match specified colors and mounted flush
- 7.50" ODC spyglass logo to be surface applied Scotchcal Duranodic 7725-69
- 2.625" "Karen..." text to be surface applied Scotchcal Duranodic 7725-69
- Cabinet to be base plate mounting onto solid core concrete base

Field measurement required  
 Solid core concrete base and footing provided by customer  
 Flood lighting provided by customer  
 PLEASE NOTE: Electric has been provided in the center of the base but is only there for future possible needs. This sign is to be manufactures as a non-luminated sign.

SCALE: 1/2 = 1'-0"

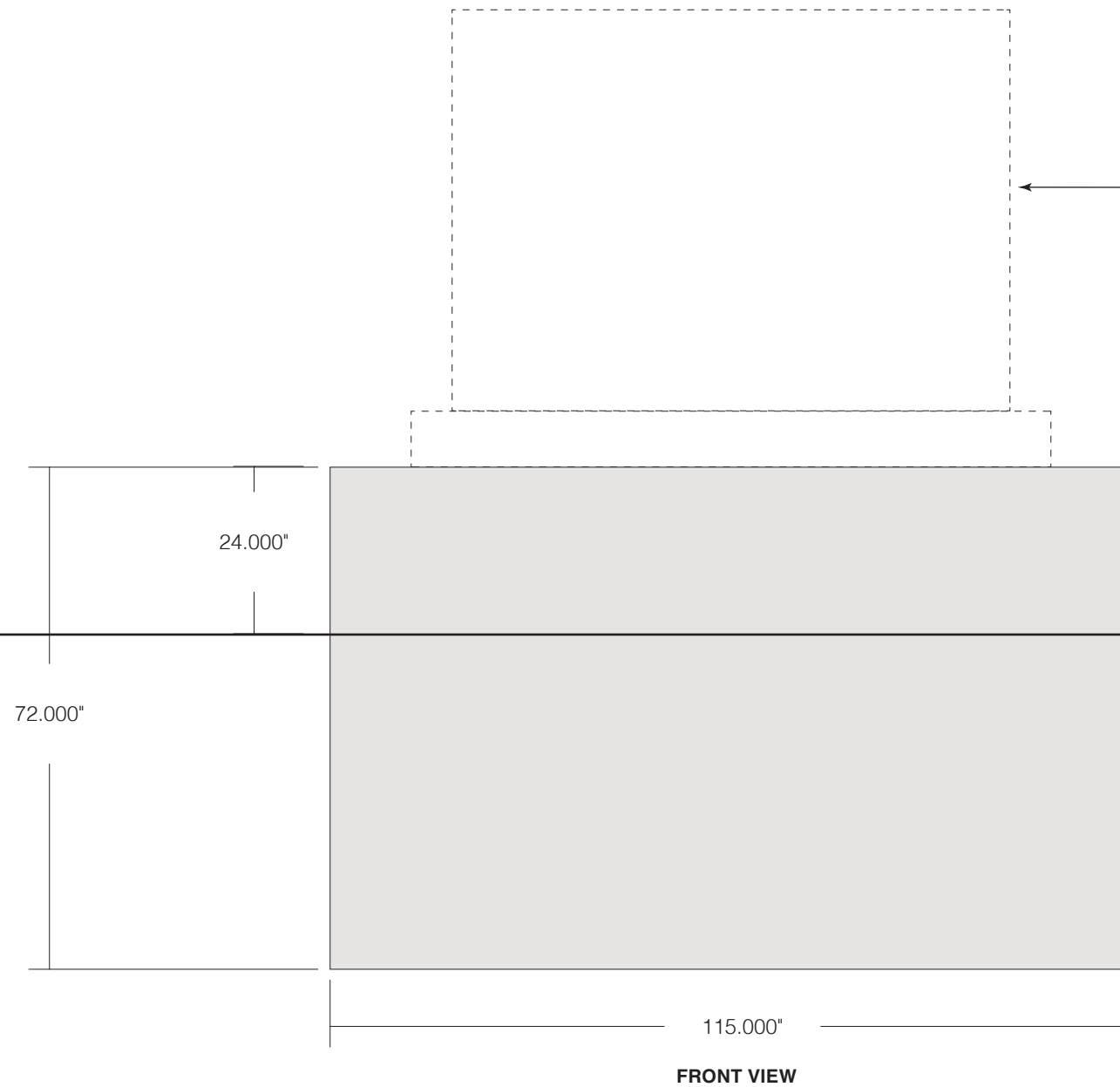
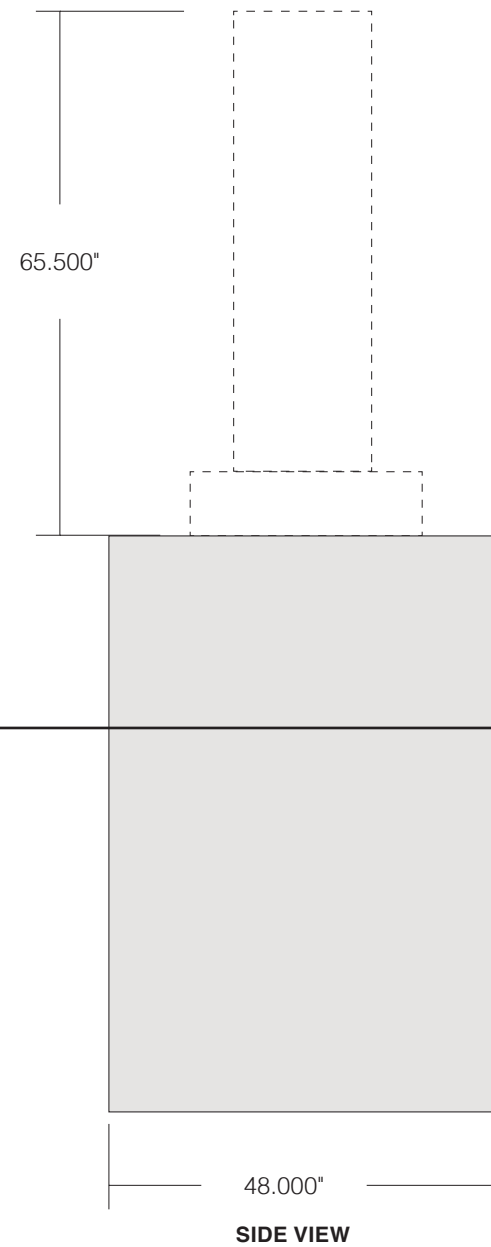
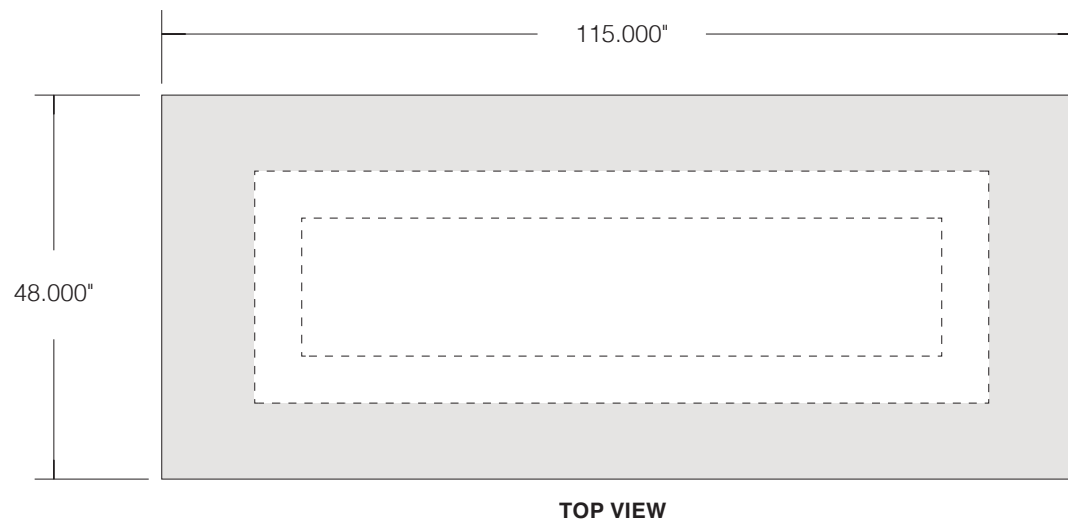


		
Mathews paint MP23430 Classic Green Bronze Metallic	Scotchcal Duranodic 7725-69	
		
Mathews paint to match Scotchcal Apple Green 7725-196	Mathews paint to match PMS 2192	Mathews paint to match Scotchcal Bright Yellow 7725-15



616.450.1767  
 sheila@creativelinestudio.com  
 creativelinestudio.com

# CONCRETE BASE INFORMATION



← Future base plate mounted sign placement

45° or radius corners to prevent chipping

This sign is non-illuminated. If flood lighting is going to be added it is suggested to place an electrical box near the sign base facing towards the building. This will allow electrical access for flood lighting installation.

**Fiber reinforced concrete suggested**

Sign to be base place mounted to solid core base. Concrete **SOLID CORE** base and footing provided by customer. Concrete base must be a **SOLID BASE** to insure a secure mount for base plate mounted sign.

**PLEASE NOTE:** This drawing is conceptual and is based on standard practices. If required an engineered sealed drawing will be provided upon request.



CreativeLine  
STUDIO & GALLERY

616.450.1767  
sheila@creativelinestudio.com  
creativelinestudio.com





**PRESCHOOL WALL ID - EAST SIDE - BUILDING 2A**

**Sign face: 87 square feet**




Fabricated aluminum non-illuminated sign  
 Cabinet to be painted with Mathews MP234330  
 50" total height dragonfly logo and logo text to be .50" deep aluminum letters  
 Logo to be painted Mathews to match specified colors and mounted flush  
**Field measurement required**  
 Surface mount flush to wall

SCALE: 1/2" = 1'-0"



**SIGN PLACEMENT**

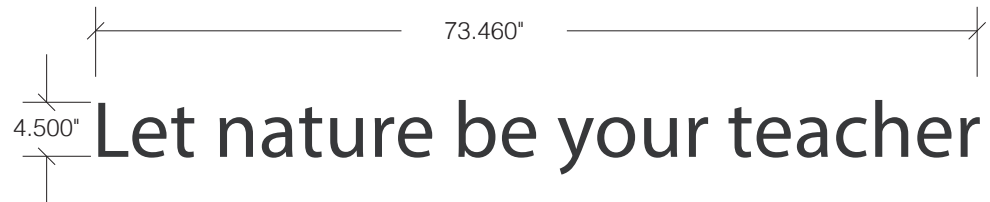
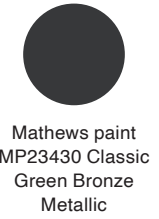
Centered between windows and do  
 SCALE: 1/16" = 1'-0"

 Mathews paint MP23430 Classic Green Bronze Metallic	 Mathews paint to match Scotchcal Apple Green 7725-196	 Mathews paint to match Scotchcal Bright Yellow 7725-15
--	--	--



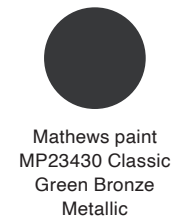
**ENTRY PORTICO - .50" DEEP ALUMINUM LETTERS**

.50" deep aluminum letters  
 Painted with Mathews MP234330  
 Mounted to roof line on mounting bar  
 Allow for proper water run off. Feet required to raise mounting bar off of roof.  
 Size of feet and how many required to be determined.  
 Placement shown lower / right  
 Field measurement required  
 SCALE: 3/4" = 1'-0"



**ENTRY PORTICO - PLATE LETTERS**

.25" thick aluminum plate letters  
 Painted with Mathews MP234330  
 Letters to be mount  
 Placement shown lower / right  
 Field measurement required  
 SCALE: 3/4" = 1'-0"



616.450.1767  
 sheila@creativelinestudio.com  
 creativelinestudio.com